

## Driving from Pune station to Dakshana Valley, Kadus

- 1) Starting from Pune station Exit Gate, take a left turn and drive straight for about 250 meters towards Alankar chowk.



Figure 1: Pune station Exit Gate

- 2) Take left from Alankar Chowk at 250 meters. Take a left turn from here and keep straight towards Jahangir hospital chowk.



Figure 2: Alankar Chowk Signal Chowk (Take left turn from here)

- 3) At 300 meters, you will come at Jahangir Hospital signal. This is one way. Take left turn from here and keep straight towards RTO road.



Figure 3: Jahangir Hospital Chowk Signal Chowk (Take left turn from here)

- 4) At 1.3 kms, you will reach RTO Chowk, Cross Sangamwadi bridge and keep straight on Pune Nashik road.

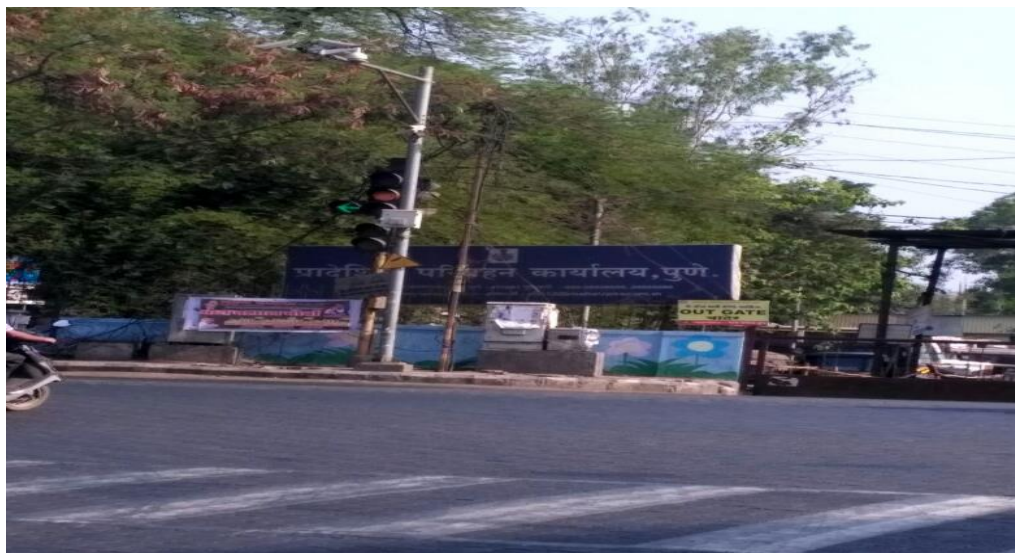


Figure 4: RTO Chowk



- 5) At 800 meters you will find CID office on left. Keep straight on Pune Nashik road towards Khadki. After 100 meters, get on the flyover ahead and keep vehicle to right side.



Figure 5: CID Office flyover

- 6) When you reach Y- intersection at flyover take right turn towards Khadki. Keep straight on Pune Nashik road.

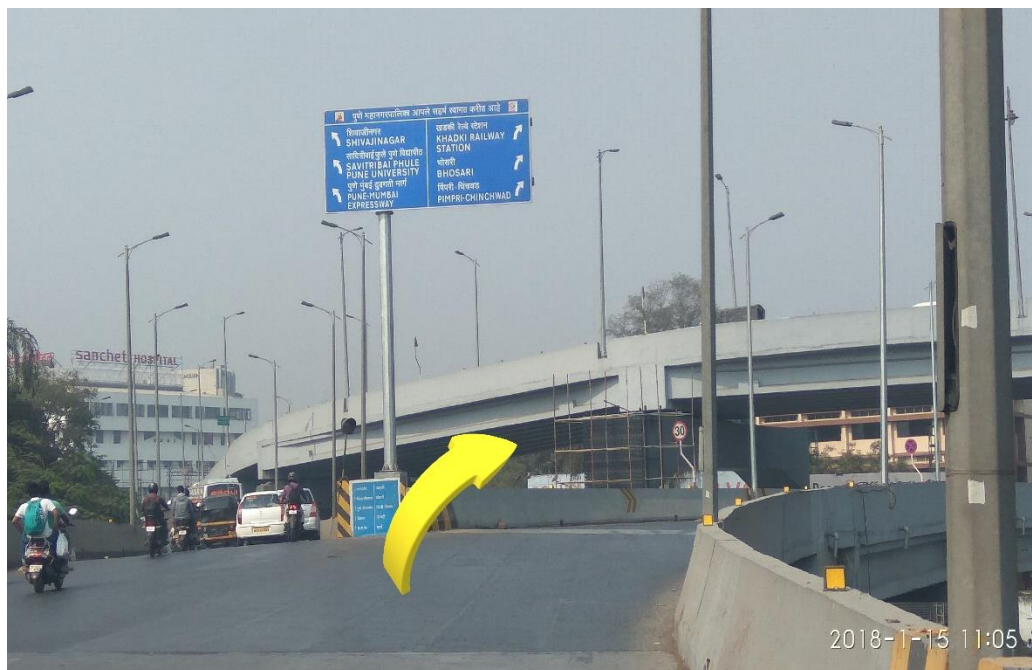


Figure 6: Flyover keep vehicle on Right side and take slight right turn

- 7) At 4.2 kms, you will see Khadki railway station on your left. Keep straight on Pune Nashik road.



*Figure7: Khadki Railway station*

- 8) At 1.9 kms you will pass College of Military Engineering (CME) on your right. Keep straight towards Bhosari on Pune Nashik road.



*Figure 8: CME*



- 9) After 3.5 kms you will come at JRD Tata flyover, Kasarwadi (Nashik Phata). Keep vehicle on right side towards Bhosari, Pune Nashik road. Continue driving till you reach Moshi toll plaza.



Figure 9: Nashik phata flyover, Keep on right towards Bhosari

- 10) At 7.6 kms you will come at Moshi Toll plaza cross toll and keep straight on Pune-Nashik Highway.



Figure 1: Moshi Toll plaza

- 11) At 19 kms you will come at Rajgurunagar Toll Plaza. Cross toll plaza and keep straight on Pune-Nashik highway.



Figure 2: Rajgurunagar Toll Plaza



- 12) At 900 meters you will come at Chandoli Phata. Take left turn towards Amul Satellite Dairy and keep straight on Kadus- Donda road.



Figure 3: Chandoli Phata (Take Left towards Amul Satellite Dairy)



Figure 4: Chandoli Phata (Jigisha Furniture on Right-Take Left)

13) At 2.6 kms you will come at Wadgaon- Patole, keep straight on Kadus-Donde road.



14) At 2.7 kms you will come at Donde Village take a left turn and keep straight on Kadus-Donde Road.



*Figure 5: Donde village-Take left turn*



- 15) At 4.5 Kms you will come on Kadus-Wada road, take left and keep straight on Kadus-Pait road.



*Figure 6: Take left turn to Kadus Village*

- 16) At 180 meters, enter Kadus Village entrance and keep straight on Kadus-Pait road.



*Figure 7:Kadus Entrance*

- 17) After driving for 1.5 kms, you will reach Dakshana Valley road. Take right and keep straight towards Dakshana Valley Entrance gate.



- 18) At 500 meters, you will reach Dakshana Entrance, enter gate and keep driving straight towards Dakshana Foundation main building.



Figure 8: Security Gate



19) At 500 meters, take left from first circle, towards the parking area.



20) Parking- At 150 meters, park your vehicle in designated parking area. Welcome to Dakshana!



*Figure 9:Welcome to Dakshana Board*

## Using Google maps while driving from Pune station to Dakshana Valley, Kadus

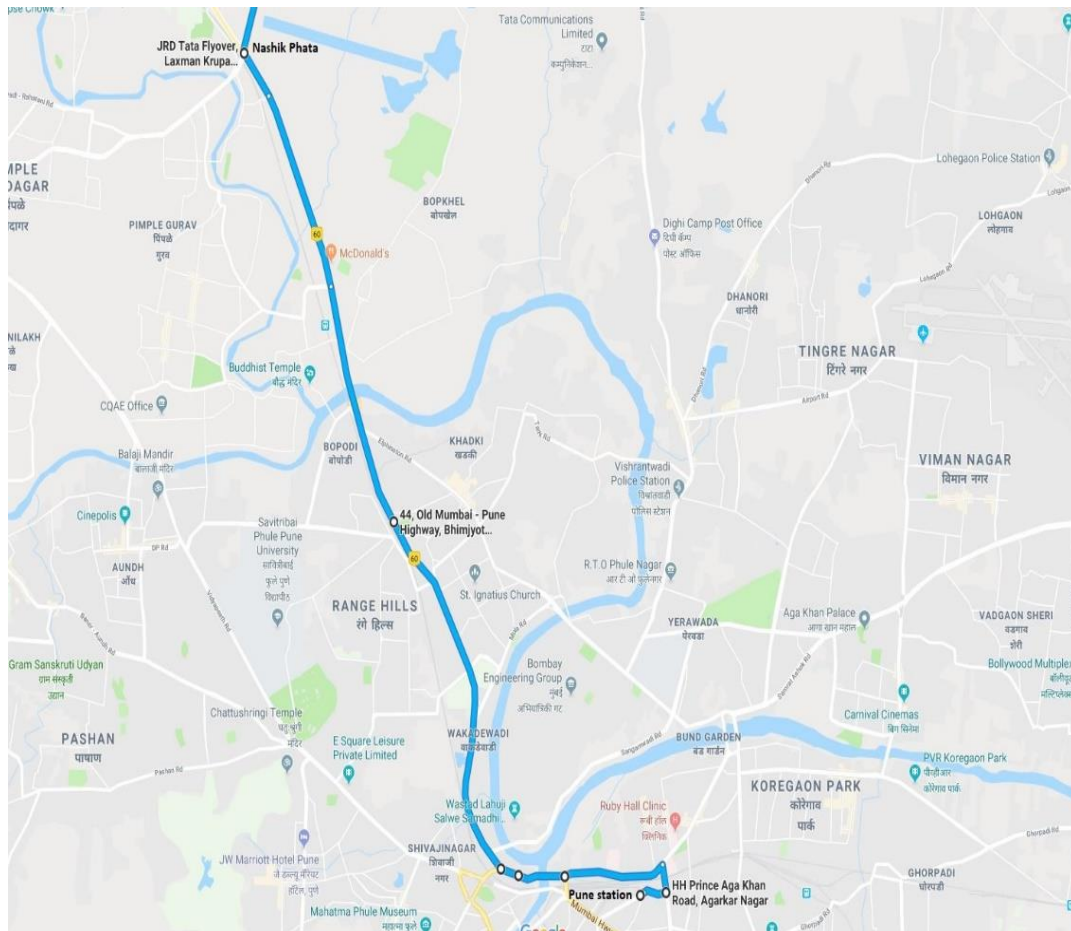


Figure 1.1: Pune station to Nashik Phata



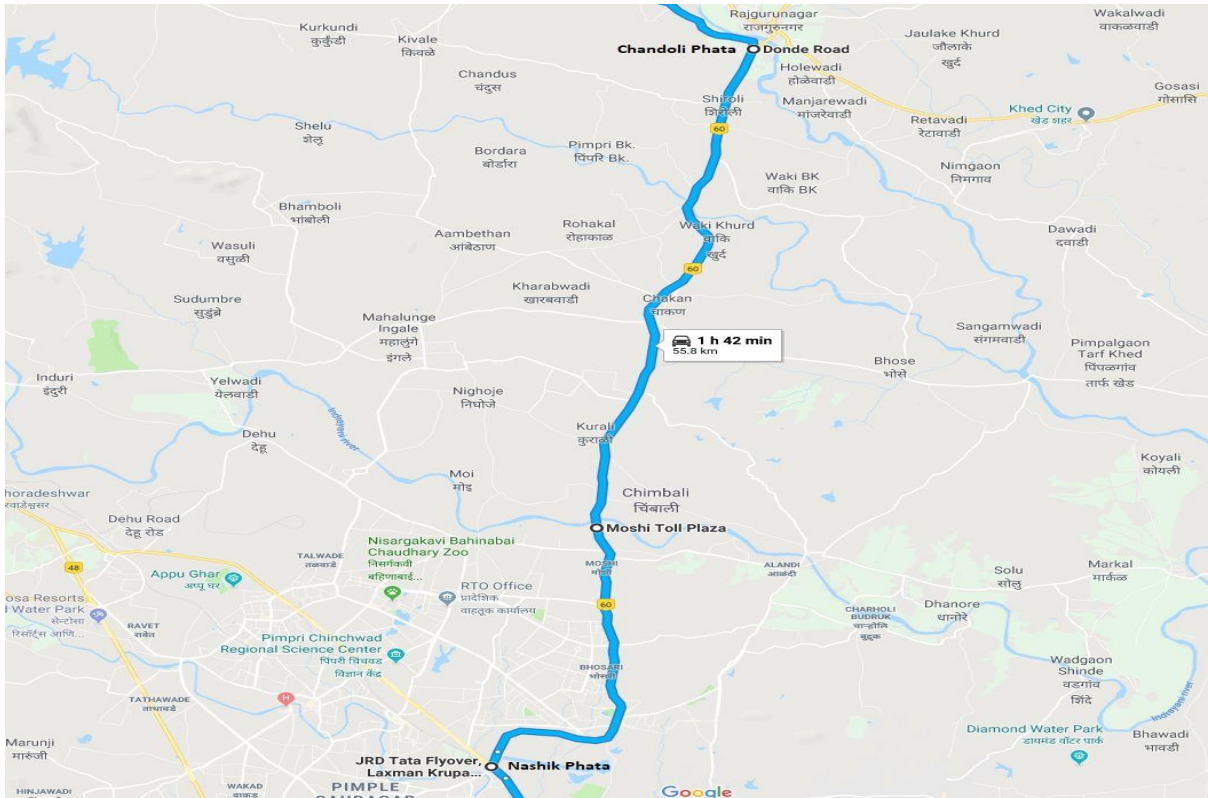


Figure 1.2: Nashik Phata to Chandoli Phata

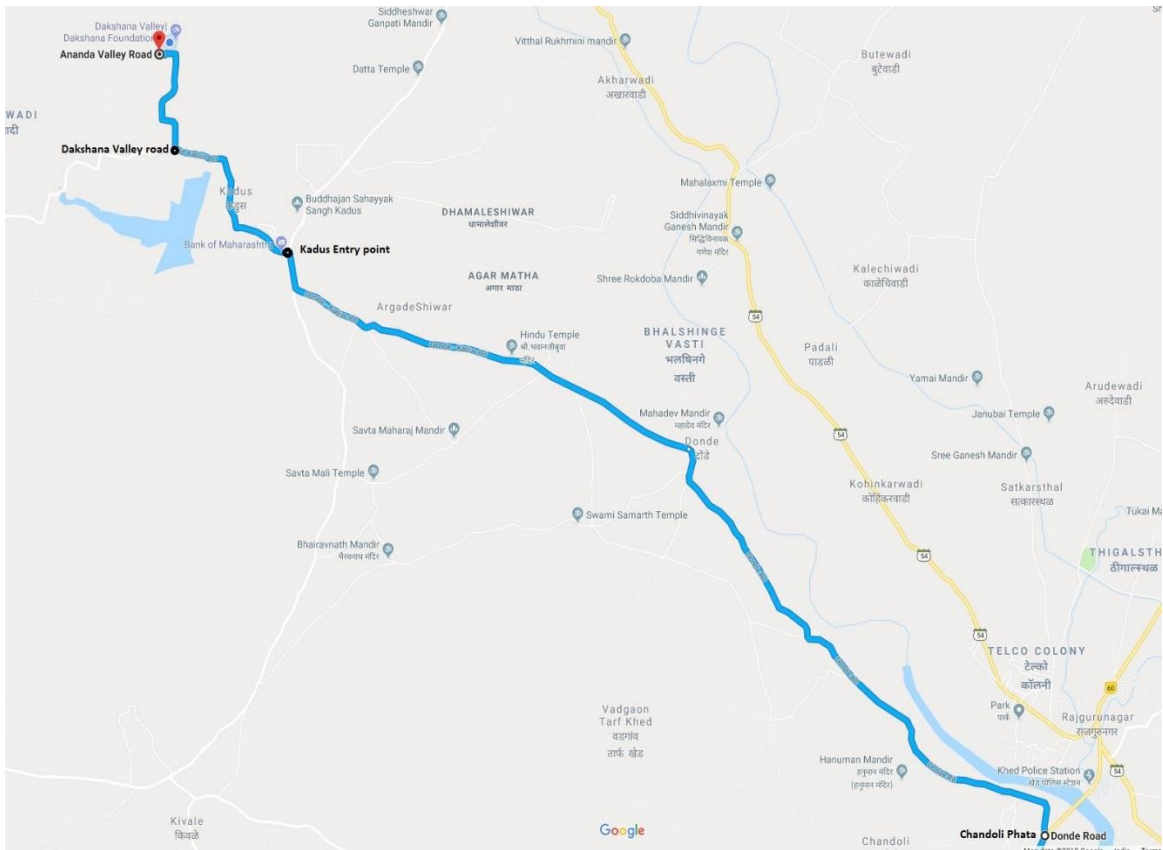


Figure1.3: Chandoli Phata to Dakshana Valley

- 1) Starting from Pune station Exit Gate, take a left turn and drive straight for about 250 meters towards Alankar chowk.



Figure 1: Pune station Exit Gate

- 2) Take left from Alankar Chowk at 250 meters. Take a left turn from here and keep straight towards Jahangir hospital chowk.



Figure 2: Alankar Chowk Signal Chowk (Take left turn from here)



- 3) At 300 meters, you will come at Jahangir Hospital signal. This is one way. Take left turn from here and keep straight towards RTO road.



Figure 3: Jahangir Hospital Chowk Signal Chowk (Take left turn from here)

- 4) At 1.3 kms, you will reach RTO Chowk, Cross Sangamwadi bridge and keep straight on Pune Nashik road.



Figure 4: RTO Chowk

- 5) At 800 meters you will find CID office on left. Keep straight on Pune Nashik road towards Khadki. After 100 meters, get on the flyover ahead and keep vehicle to right side.



Figure 5: CID Office flyover

- 6) When you reach Y- intersection at flyover take right turn towards Khadki. Keep straight on Pune Nashik road.

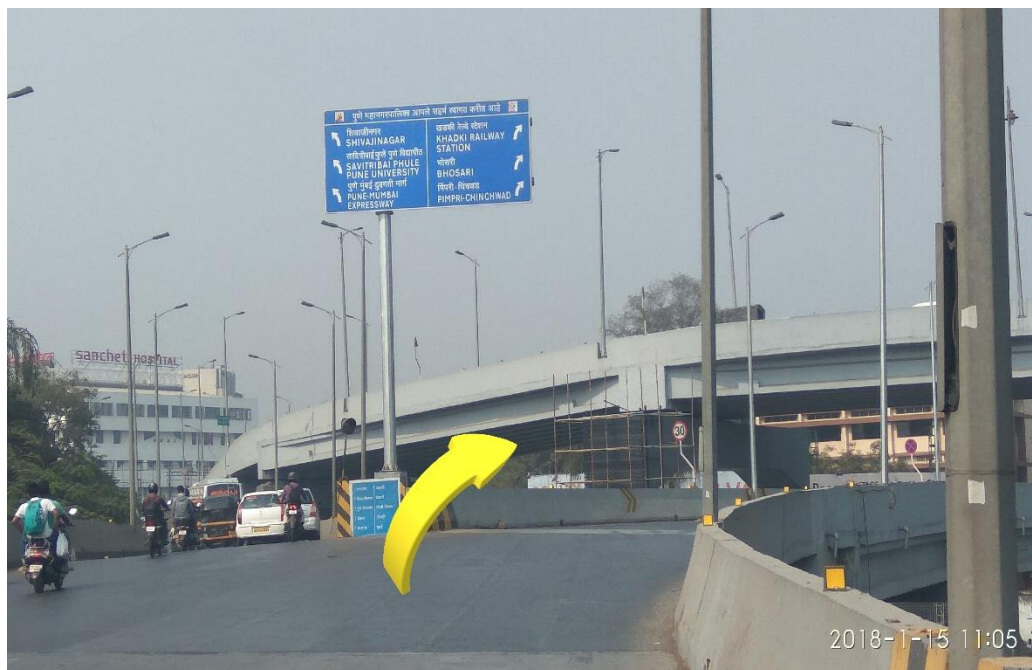


Figure 6: Flyover keep vehicle on Right side and take slight right turn



- 7) At 4.2 kms, you will see Khadki railway station on your left. Keep straight on Pune Nashik road.



*Figure7: Khadki Railway station*

- 8) At 1.9 kms you will pass College of Military Engineering (CME) on your right. Keep straight towards Bhosari on Pune Nashik road.



*Figure 8: CME*

- 9) After 3.5 kms you will come at JRD Tata flyover, Kasarwadi (Nashik Phata). Keep vehicle on right side towards Bhosari, Pune Nashik road. Continue driving till you reach Moshi toll plaza.



Figure 9: Nashik Phata flyover, Keep right towards Bhosari



- 10) At 7.6 kms you will come at Moshi Toll plaza cross toll and keep straight on Pune-Nashik Highway.



Figure 2: Moshi Toll plaza

- 11) At 19 kms you will come at Rajgurunagar Toll Plaza. Cross toll plaza and keep straight on Pune-Nashik highway.



Figure 3: Rajgurunagar Toll Plaza

- 12) At 900 meters you will come at Chandoli Phata. Take left turn towards Amul Satellite Dairy and keep straight on Kadus- Donda road.



Figure 4: Chandoli Phata (Take Left towards Amul Satellite Dairy)



Figure 5: Chandoli Phata (Jigisha Furniture on Right-Take Left)



13) At 2.6 kms you will come at Wadgaon- Patole, keep straight on Kadus-Donde road.



14) At 2.7 kms you will come at Donde Village take a left turn and keep straight on Kadus-Donde Road.



*Figure 6: Donde village-Take left turn*

- 15) At 4.5 Kms you will come on Kadus-Wada road, take left and keep straight on Kadus-Pait road.



*Figure 7: Take left turn to Kadus Village*

- 16) At 180 meters, enter Kadus Village entrance and keep straight on Kadus-Pait road.



*Figure 8:Kadus Entrance*



- 17) After driving for 1.5 kms, you will reach Dakshana Valley road. Take right and keep straight towards Dakshana Valley Entrance gate.



- 18) At 500 meters, you will reach Dakshana Entrance, enter gate and keep driving straight towards Dakshana Foundation main building.



*Figure 9: Security Gate*



19) At 500 meters, take left from first circle, towards the parking area.



20) Parking- At 150 meters, park your vehicle in designated parking area. Welcome to Dakshana!



Figure 10: Welcome to Dakshana Board