

Driving from Pune airport to Dakshana Valley, Kadus

- 1) Turn right after you exit Pune Airport Gate No.2 towards Vishrantwadi/ Lohegaon.



Figure 1: Pune Airport Exit Gate No.2



Figure 2: Take right towards Lohegaon / Vishrantwadi

- 2) At 500 mts you will reach Weikfield chowk. Turn left at this point and keep driving straight towards Alandi-Vishrantwadi road.



Figure 3: Weikfield Chowk (Take left turn from here)

- 3) At 600 mts you will reach at a signal. Cross this signal and keep straight on Alandi-Vishrantwadi road.



Figure 4: Signal on Alandi-Vishrantwadi road

- 4) In 2.3 kms, you will reach Vishrantwadi Chowk. From this chowk, take right and keep straight on Alandi-Vishrantwadi road.



Figure 5: Vishrantwadi Chowk (Take Right Turn)

- 5) After traveling for 1.1 kms from Vishrantwadi Chowk, you will find DRDO (Defence Research and Development Organisation), R&DE to your right side. Drive ahead on Alandi-Vishrantwadi road.



Figure 6: DRDO, R&DE (Engrs)

- 6) An important landmark after you drive 3.2 kms further would be AIT (Army Institute of Technology) on your right side. Keep driving straight on Alandi-Vishrantwadi road.



Figure 7: Army Institute of Technology on Right side

- 7) After driving for 8.2 kms, you will come across a signage at (Dehu-Alandi road) Moshi Phata. At this point, take left and keep straight on Dehu-Alandi road.



Figure 8: Moshi Phata Take left turn (Dehu-Alandi road)

- 8) You will reach Hawaldar wasti signal after driving for 3.4 kms on Dehu-Alandi road. Take slight right turn and keep going straight on Dehu-Alandi road.



Figure 9: Hawaldar wasti Signal, Take slight right turn

- 9) You will reach Bharatmata chowk, Moshi after driving for 1.7 kms. Take a right turn from Bharatmata chowk and move ahead on Pune-Nashik Highway.



Figure 10:Bharatmata Chowk, Moshi (Take Right turn)

- 10) Reach Moshi Toll plaza in 850 mts and cross the toll to move ahead on Pune-Nashik Highway.



Figure 11: Moshi Toll plaza

- 11) After driving for 19 kms, you will reach Rajgurunagar Toll Plaza. Cross toll plaza and keep straight on Pune-Nashik highway.



Figure 12: Rajgurunagar Toll Plaza

- 12) Keep driving for 900 mts until you reach Chandoli Phata. Take left turn towards Amul Satellite Dairy and drive onto Kadus -Donde road. You will notice Jigisha Furniture on your right when you move towards Amul Satellite Dairy.



Figure 13: Chandoli Phata (Take Left towards Amul Satellite Dairy)



Figure 14: Chandoli Phata(Jigisha Furniture on Right-Take Left)

- 13) After driving for 2.6 kms you will see this signage at Wadgaon-Patole. Keep driving straight on Kadus-Donde road.



- 14) Pass Donde Village after a 2.7 km drive, take left turn and continue on Kadus-Donde road.



Figure 15: Donde village-Take left turn

- 15) Take left after driving for 4.5 kms, you will reach Kadus-Wada road. Drive ahead on Kadus-Pait road.



Figure 16: Take left turn to Kadus Village

- 16) At 180 mts distance, you will see Kadus Village entrance. Enter and drive straight on Kadus-Pait road.



Figure 17:Kadus Entrance

- 17) After 1.5 kms you will see Dakshana Valley road, take right and keep straight towards Dakshana Valley Entrance gate.



- 18) In 500 mts, you will reach Dakshana Entrance. At the main gate, you will be welcomed by the Security Guard. The mileage on the car's dashboard will be noted and a check of the boot will be carried out. You will be provided Visitor badges. Once you pass the gate drive straight and follow the road till you come to a crossroad with an indicator of various locations. Follow the path for the Headquarter Building. Enter the gate and keep straight towards Dakshana Foundation.



Figure 18: Security Gate

19) At 500 mts, take left towards parking area.



20) Parking- Park your vehicle at Designated Parking. You shall be soon met by a member of Team Dakshana. You could call Dakshana Fellow Ruturaj Patil +91.86000.43897 in case of any difficulty. Welcome to Dakshana!



Figure 19: Welcome to Dakshana Board

Using Google Maps while driving from Pune Airport to Dakshana Valley, Kadus.

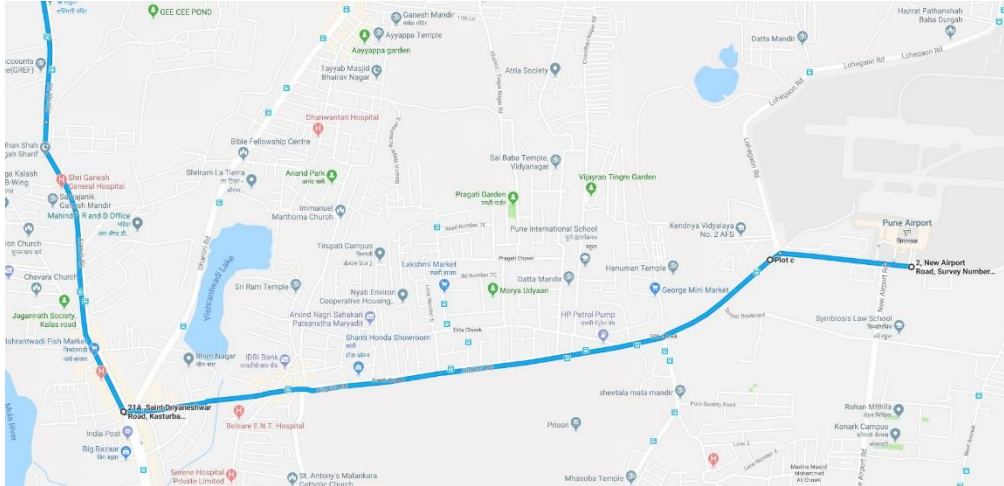


Figure 20: Pune Airport to DV_1

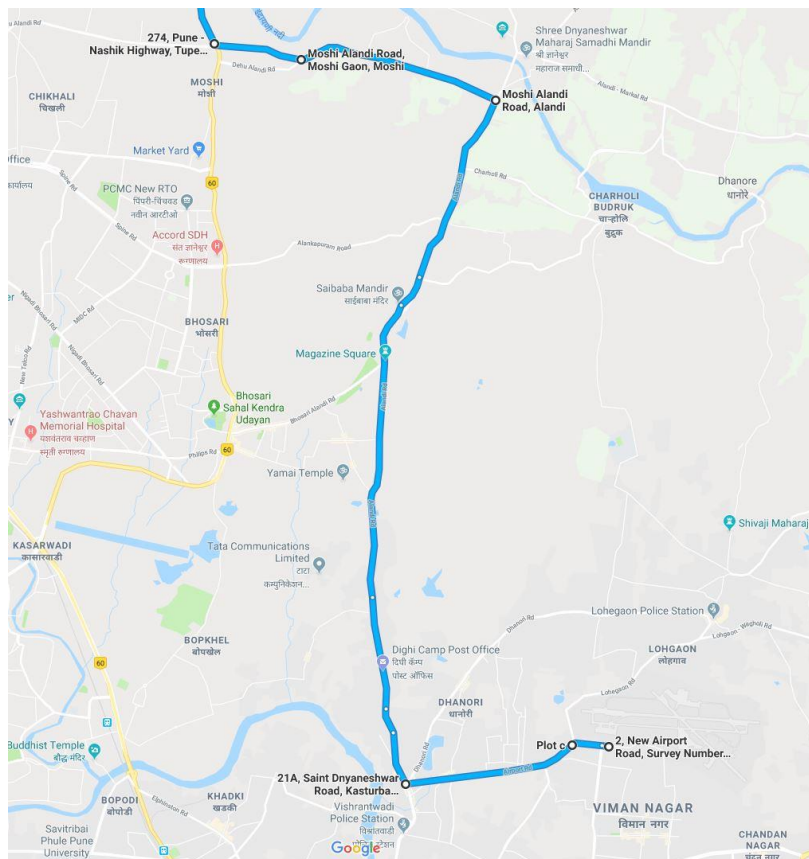


Figure 21: Pune Airport to DV_2

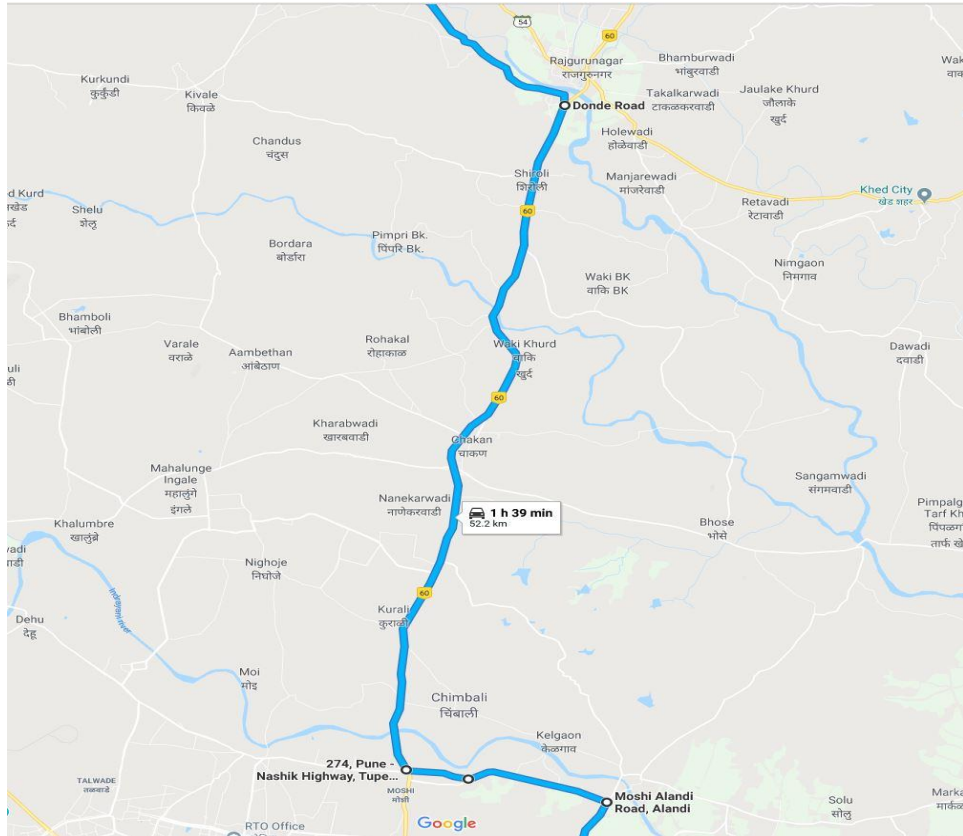


Figure 22:Pune Airport to DV_3

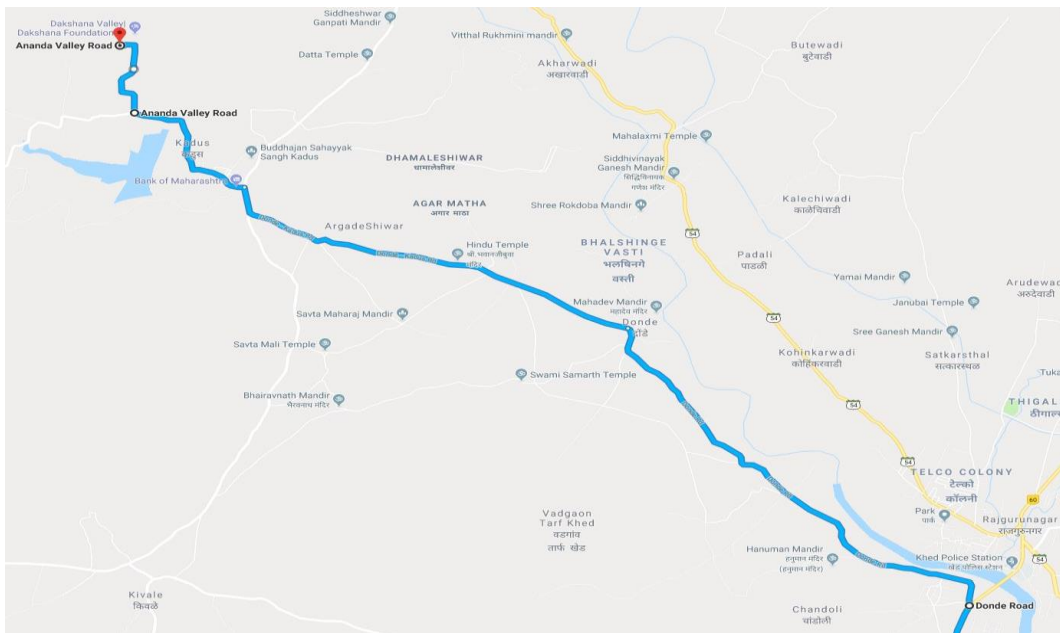


Figure 23:Pune Airport to DV_4

- 1) Turn right after you exit Pune Airport Gate No.2 towards Vishrantwadi/ Lohegaon.



Figure 24:Pune Airport Exit Gate No.2



Figure 25: Take right towards Lohegaon / Vishrantwadi

- 2) At 500 mts you will reach Weikfield chowk. Turn left at this point and keep driving straight towards Alandi-Vishrantwadi road.



Figure 26: Weikfield Chowk (Take left turn from here)

- 3) At 600 mts you will reach at a signal. Cross this signal and keep straight on Alandi-Vishrantwadi road.



Figure 27: Signal on Alandi-Vishrantwadi road

- 4) In 2.3 kms, you will reach Vishrantwadi Chowk. From this chowk, take right and keep straight on Alandi-Vishrantwadi road.



Figure 28: Vishrantwadi Chowk (Take Right Turn)

- 5) After traveling for 1.1 kms from Vishrantwadi Chowk, you will find DRDO (Defence Research and Development Organisation), R&DE to your right side. Drive ahead on Alandi-Vishrantwadi road.



Figure 29: DRDO, R&DE (Engrs)

- 6) An important landmark after you drive 3.2 kms further would be AIT (Army Institute of Technology) on your right side. Keep driving straight on Alandi-Vishrantwadi road.



Figure 30: Army Institute of Technology on Right side

- 7) After 3.2 kms, you will reach Bhosari Phata. Here, Google will suggest an alternate route to Chakan via Bhosari from your left. Don't take that route and keep driving straight on Alandi-Vishrantwadi road.



Figure 31: Bhosari Phata- Don't take left turn

- 8) After driving for 5 kms, you will come across a signage at (Dehu-Alandi road) Moshi Phata. At this point, take left and keep straight on Dehu-Alandi road.



Figure 32: Moshi Phata Take left turn (Dehu-Alandi road)

- 9) You will reach Hawaldar wasti signal after driving for 3.4 kms on Dehu-Alandi road. Take slight right turn and keep going straight on Dehu-Alandi road.



Figure 33: Hawaldar wasti Signal, Take slight right turn

- 10) You will reach Bharatmata chowk, Moshi after driving for 1.7 kms. Take a right turn from Bharatmata chowk and move ahead on Pune-Nashik Highway.



Figure 34:Bharatmata Chowk, Moshi (Take Right turn)

- 11) Reach Moshi Toll plaza in 850 mts and cross the toll to move ahead on Pune-Nashik Highway.



Figure 35: Moshi Toll plaza

- 12) After driving for 19 kms, you will reach Rajgurunagar Toll Plaza. Cross toll plaza and keep straight on Pune-Nashik highway.



Figure 36: Rajgurunagar Toll Plaza

- 13) Keep driving for 900 mts until you reach Chandoli Phata. Take left turn towards Amul Satellite Dairy and drive onto Kadus -Donde road. You will notice Jigisha Furniture on your right when you move towards Amul Satellite Dairy.



Figure 37: Chandoli Phata (Take Left towards Amul Satellite Dairy)



Figure 38: Chandoli Phata(Jigisha Furniture on Right-Take Left)

- 14) After driving for 2.6 kms you will see this signage at Wadgaon-Patole. Keep driving straight on Kadus-Donde road.



- 15) Pass Donde Village after a 2.7 km drive, take left turn and continue on Kadus-Donde road.



Figure 39: Donde village-Take left turn

- 16) Take left after driving for 4.5 kms, you will reach Kadus-Wada road. Drive ahead on Kadus-Pait road.



Figure 40: Take left turn to Kadus Village

- 17) At 180 mts distance, you will see Kadus Village entrance. Enter and drive straight on Kadus-Pait road.



Figure 41:Kadus Entrance

18) After 1.5 kms you will see Dakshana Valley road, take right and keep straight towards Dakshana Valley Entrance gate.



19) In 500 mts, you will reach Dakshana Entrance. At the main gate, you will be welcomed by the Security Guard. The mileage on the car's dashboard will be noted and a check of the boot will be carried out. You will be provided Visitor badges. Once you pass the gate drive straight and follow the road till you come to a crossroad with an indicator of various locations. Follow the path for the Headquarter Building. Enter the gate and keep straight towards Dakshana Foundation.



Figure 42: Security Gate

20) At 500 mts, take left towards parking area.



21) Parking- Park your vehicle at Designated Parking. You shall be soon met by a member of Team Dakshana. You could call Dakshana Fellow Ruturaj Patil +91.86000.43897 in case of any difficulty. Welcome to Dakshana!



Figure 43:Welcome to Dakshana Board

Driving from Dakshana Valley, Kadus Village to Pune Airport

1. Start from parking: Take your car from parking.



Figure 44: Parking



Figure 45: Right from Circle

2. Turn right from circle and move towards the main gate for 600 mts.



Figure 46: Security Gate



Figure 47: Take left from This point

3. At the Security Gate, kindly handover any Visitor Badges that you may have. The Security Guard may be allowed to note the speedometer reading and check the boot. Drive through for 500 mts till you touch the Pait road near the Dakshana signage. Turn left towards Kadus village.



Figure 48: Take left from This point

4. After 1.2 kms, take left from Bhairavnath Temple road.



Figure 49: Entrance

5. After 500 mts pass Kadus village entrance/ Bank of Maharashtra (BOM) at right.



Figure 50: Take Right From This point

6. At 100 mts turn right from this T- junction towards Chandoli Phata.



Figure 51: At Right HP Fuel station at 500m



Figure 52: Take right

7. Keep following the road as you pass the HP fuel station on your right and reach Donde village after 4.8 kms.



Figure 53: Village Donde

8. Take Left turn at 300 m (after Donda village) towards Chandoli Phata- Pune Nashik Highway.



Figure 54: Take left at 300 m



Figure 55: Village Wadgaon at 2.8 km

9. You will pass Wadgaon Village after 2.8 kms.



Figure 56:Chandoli Phata at 2.7 km from Wadgaon

10. At 2.7 kms, turn left onto Pune-Nashik Highway, Chandoli. **Google will suggest you a left turn, don't take that left turn.** You will see a huge store – Jigisha Furniture - on your left.



Figure 57:Chandoli Phata (Jigisha afurniture on Left hand side) on Chandoli phata



Figure 58: Khed Toll Plaza

11. At 900 mts you will reach Khed toll plaza. Keep driving straight on Pune-Nashik Highway.
Rates for Car: Single journey- INR 31/ Return journey: INR 46.



Figure 59: On Left after 3.6 Km you will find Rajratna Hotel. Keep straight to Chakan



Figure 60: Ambethan Chowk. Keep straight on Pune-Nashik Highway

12. After driving for 7.2 kms, you will find Sahara hotel on left. This is Ambethan Chowk, Chakan. Keep driving straight on Pune-Nashik Highway.

13. 2.2 kms ahead of Hotel Sahara, you will reach Talegaon Chowk Signal, Chakan. Keep moving straight on Pune-Nashik Highway.

14. After driving for 5.4 kms from Talegaon Chowk, you will cross Chimbli Phata. Keep driving straight on Pune Nashik Highway.



Figure 61: Moshi Toll Plaza

15. You will reach toll plaza after driving for 900 mts from Chimbli phata. Drive ahead on Pune-Nashik Highway.

Rates for Car: Single journey- INR 31/ Return journey: INR 46.

(No need to pay toll if you have taken a receipt on Khed Toll plaza.)

16. After 900 mts you will reach Bharatmata Chowk on Dehu Alandi road. **Google will suggest you to keep straight. Don't keep straight.**

Take a left turn and then keep going straight.

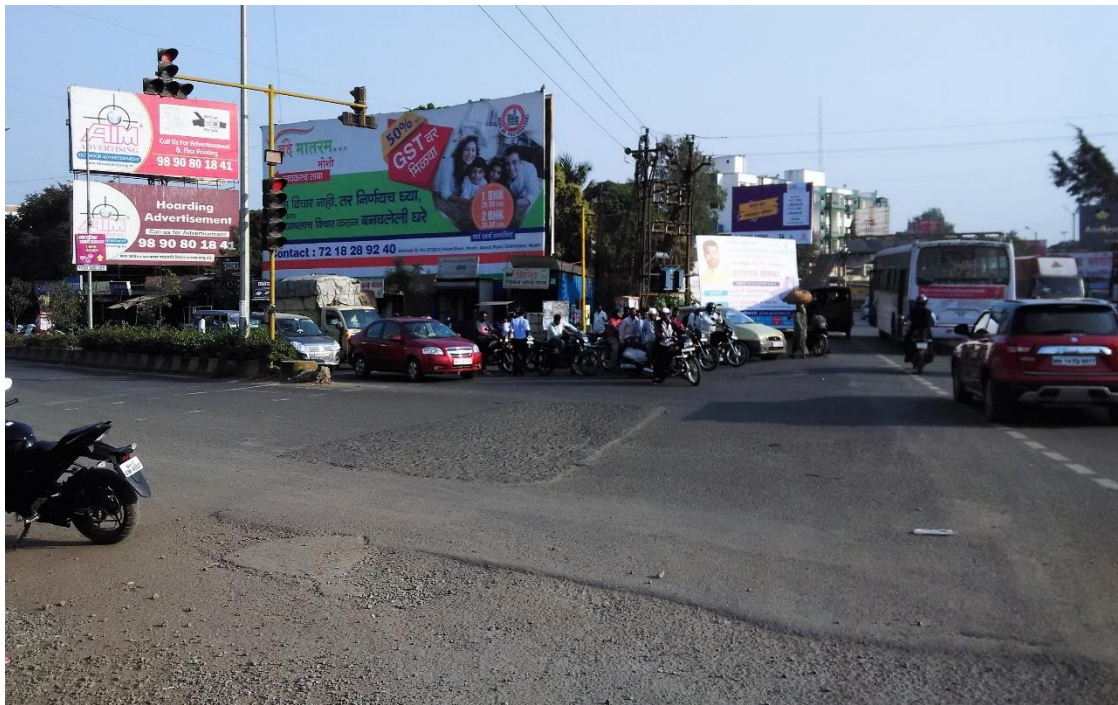


Figure 62: Bharatmata Chowk, Moshi (Dehu-Alandi Road)

17. Take slight left turn after 1.4 kms and you will reach Hawaldar Wasti traffic signal.



Figure 63: Hawaldar wasti signal - Take slight left turn

18. You will reach Alandi-Dighi road after 3.3 kms. Take right turn from this point towards Dighi and move ahead.



Figure 64: Alandi-Dighi Road (Right turn)

19. Take the fly over after driving for 3 kms.



Figure 65: Alandi-Dighi Bridge

20. An important landmark after you travel for 4.5 kms is Army Institute of Technology (AIT) on your left. Drive ahead on Alandi-Vishrantwadi road.



Figure 66: AIT on left

21. 3.9 kms after crossing AIT, you will reach Vishrantwadi chowk. Keep your vehicle left and take left turn and drive straight after turning on airport road.



Figure 67: Vishrantwadi chowk (Take left turn)

22. Continue moving straight on Airport road, after crossing Traffic signal in 2.2 kms.



Figure 68: Airport road-Traffic signal

23. You will reach Weikfield chowk in 550 mts. Take right turn from the circle towards Airport Gate No. 1.



Figure 69: Weikfield Chowk



Figure 70: Weikfield Chowk, (Take Right turn to airport)

24. After reaching Gate No.1 in 400 mts, take a right turn and enter Gate 1.



Figure 71:Pune Airport Entry Gate No.1



Figure 72:Pune Airport Entry Gate No.1

Total Distance from Dakshana Valley to Pune Airport is 53.8 kms.

Using Google Maps while driving from Dakshana Valley, Kadus Village to Pune Airport

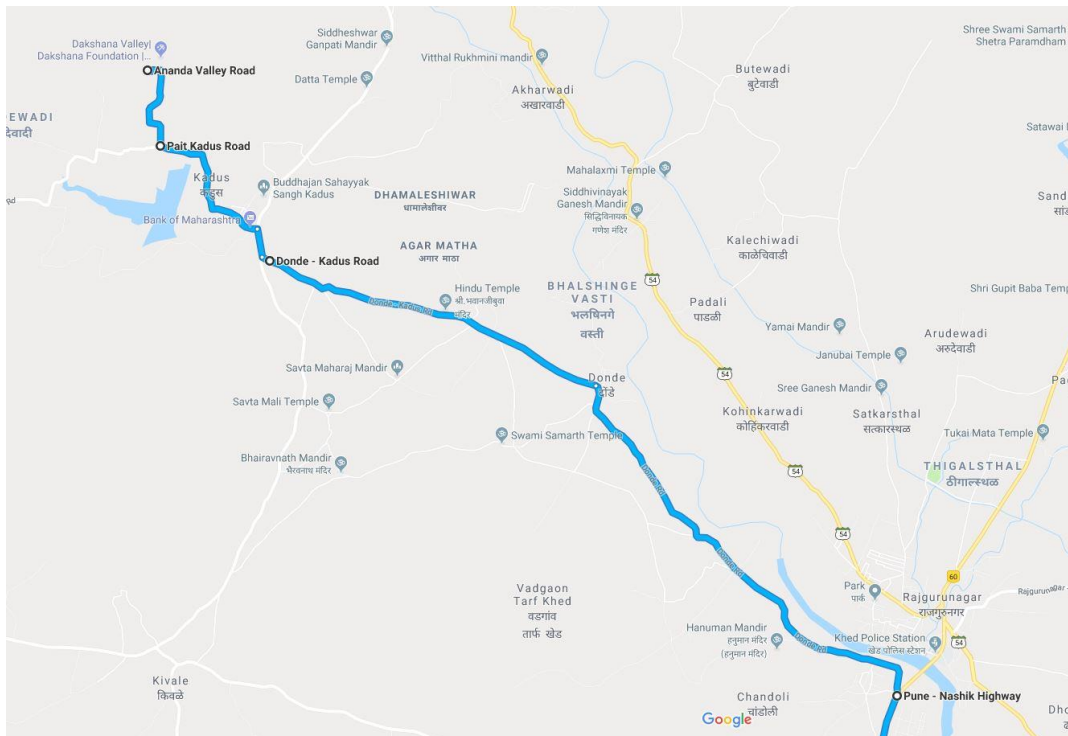


Figure 73:DV to Pune airport_1

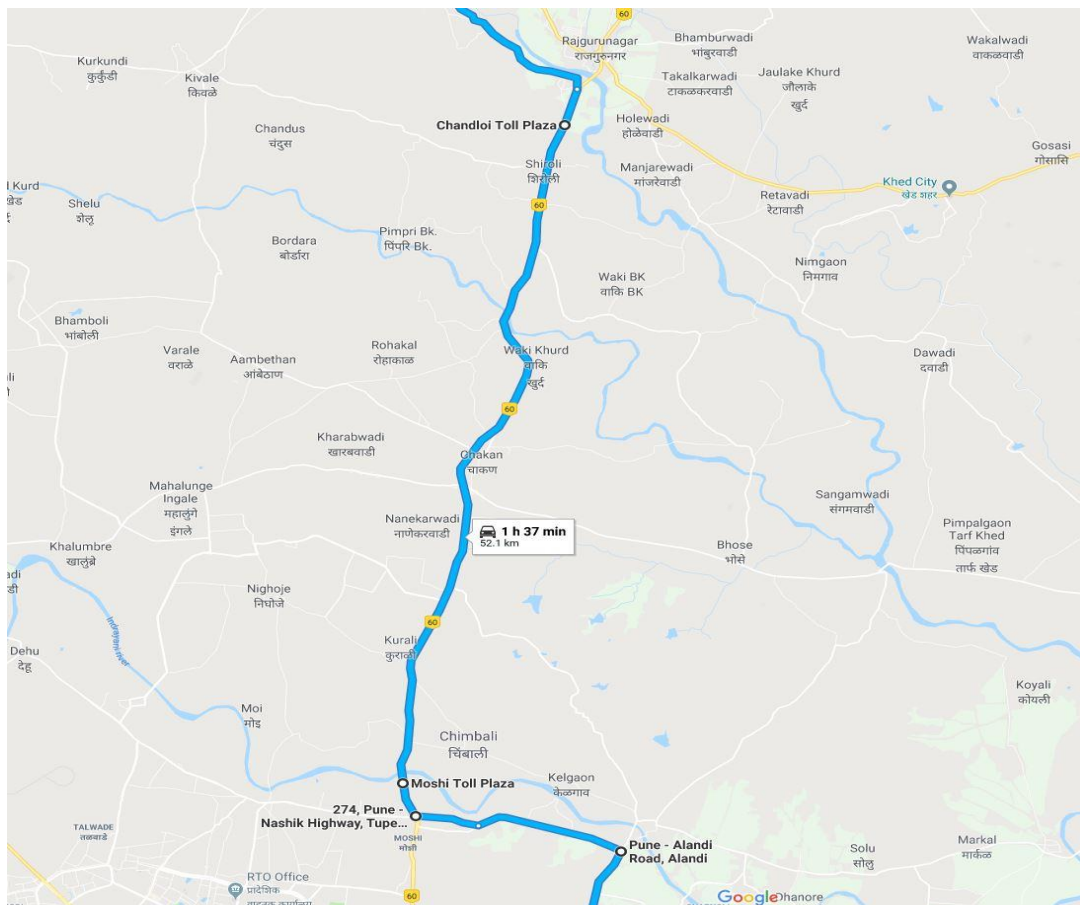


Figure 74:DV to Pune airport_2

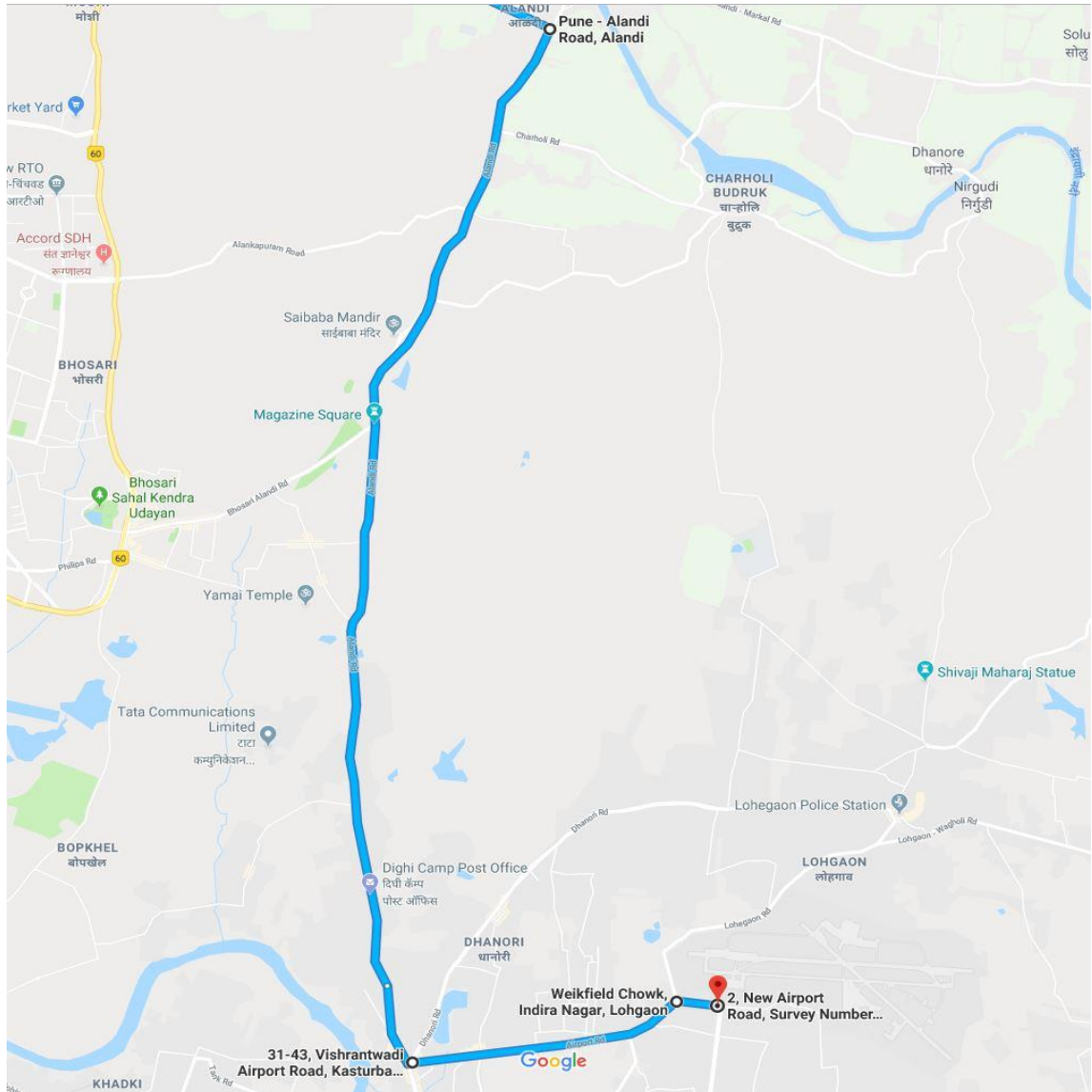


Figure 75:DV to Pune airport_3

1. Start from parking: Take your car from parking.



Figure 76: Parking

2. Turn right from circle and move towards the main gate for 600 mts.



Figure 77: Right from Circle



Figure 78: Security Gate



Figure 79: Take left from This point

3. At the Security Gate, kindly handover any Visitor Badges that you may have. The Security Guard may be allowed to note the speedometer reading and check the boot. Drive through for 500 mts till you touch the Pait road near the Dakshana signage. Turn left towards Kadus village.



Figure 80: Take left from This point

4. After 1.2 kms, take left from Bhairavnath Temple road.



Figure 81: Entrance

5. After 500 mts pass Kadus village entrance/ Bank of Maharashtra (BOM) at right.



Figure 82: Take Right from This point

6. At 100 mts turn right from this T- junction towards Chandoli Phata.



Figure 83: At Right HP Fuel station at 500m



Figure 84: Take right

7. Keep following the road as you pass the HP fuel station on your right and reach Donde village after 4.8 kms.



Figure 85: Village Donde

8. Take Left turn at 300 m (after Donda village) towards Chandoli Phata- Pune Nashik Highway.



Figure 86: Take left at 300 m



Figure 87: Village Wadgaon at 2.8 km

9. You will pass Wadgaon Village after 2.8 kms.



Figure 88:Chandoli Phata at 2.7 km from Wadgaon

10. At 2.7 kms, turn left onto Pune-Nashik Highway, Chandoli. **Google will suggest you a left turn, don't take that left turn.** You will see a huge store – Jigisha Furniture - on your left.



Figure 89:Chandoli Phata (Jigisha furniture on Left hand side) on Chandoli phata



Figure 90: Khed Toll Plaza

11. At 900 mts you will reach Khed toll plaza. Keep driving straight on Pune-Nashik Highway.

Rates for Car: Single journey- INR 31/ Return journey: INR 46.



Figure 91: On Left after 3.6 Km you will find Rajratna Hotel. Keep straight to Chakan



Figure 92: Ambethan Chowk. Keep straight on Pune-Nashik Highway

12. After driving for 7.2 kms, you will find Sahara hotel on left. This is Ambethan Chowk, Chakan. Keep driving straight on Pune-Nashik Highway.

13. 2.2 kms ahead of Hotel Sahara, you will reach Talegaon Chowk Signal, Chakan. Keep moving straight on Pune-Nashik Highway.

14. After driving for 5.4 kms from Talegaon Chowk, you will cross Chimbli Phata. Keep driving straight on Pune Nashik Highway.



Figure 93: Moshi Toll Plaza

15. You will reach toll plaza after driving for 900 mts from Chimbli phata. Drive ahead on Pune-Nashik Highway.

Rates for Car: Single journey- INR 31/ Return journey: INR 46.

(No need to pay toll if you have taken a receipt on Khed Toll plaza.)

16. After 900 mts you will reach Bharatmata Chowk on Dehu Alandi road. **Google will suggest you to keep straight. Don't keep straight.**

Take a left turn and then keep going straight.

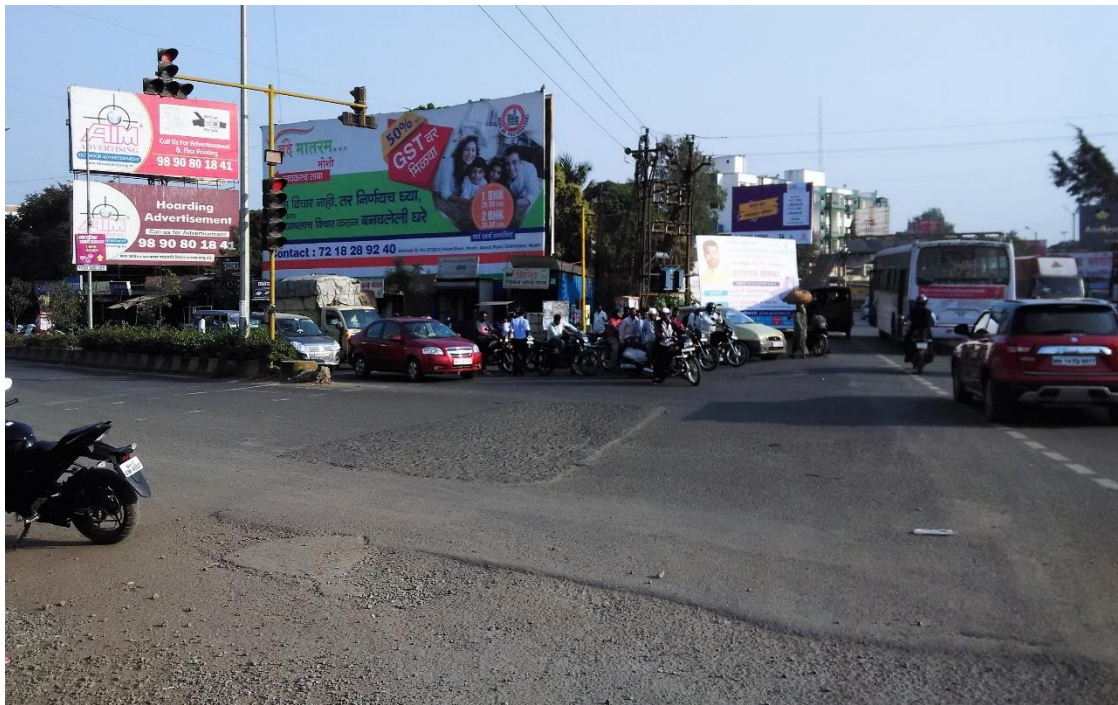


Figure 94: Bharatmata Chowk, Moshi (Dehu-Alandi Road)

17. Take slight left turn after 1.4 kms and you will reach Hawaldar Wasti traffic signal.



Figure 95: Hawaldar wasti signal - Take slight left turn

18. You will reach Alandi-Dighi road after 3.3 kms. Take right turn from this point towards Dighi and move ahead.



Figure 96: Alandi-Dighi Road (Right turn)

19. Take the fly over after driving for 3 kms.



Figure 97: Alandi-Dighi Bridge

20. An important landmark after you travel for 4.5 kms is Army Institute of Technology (AIT) on your left. Drive ahead on Alandi-Vishrantwadi road.



Figure 98: AIT on left

21. 3.9 kms after crossing AIT, you will reach Vishrantwadi chowk. Keep your vehicle left and take left turn and drive straight after turning on airport road.



Figure 99: Vishrantwadi chowk (Take left turn)

22. Continue moving straight on Airport road, after crossing Traffic signal in 2.2 kms.



Figure 100: Airport road-Traffic signal

23. You will reach Weikfield chowk in 550 mts. Take right turn from the circle towards Airport Gate No. 1.



Figure 101: Weikfield Chowk



Figure 102: Weikfield Chowk, (Take Right turn to airport)

24. After reaching Gate No.1 in 400 mts, take a right turn and enter Gate 1.



Figure 103: Pune Airport Entry Gate No.1



Figure 104:Pune Airport Entry Gate No.1

Total Distance from Dakshana Valley to Pune Airport is 53.8 kms.